

Introduction to Computer Engineering – EECS 203

<http://ziyang.eecs.northwestern.edu/~dickrp/eecs203/>

Instructor: Robert Dick
Office: L477 Tech
Email: dickrp@northwestern.edu
Phone: 847-467-2298

TA: Neal Oza
Office: Tech. Inst. L375
Phone: 847-467-0033
Email: nealoza@u.northwestern.edu

TT: David Bild
Office: Tech. Inst. L470
Phone: 847-491-2083
Email: d-bild@northwestern.edu

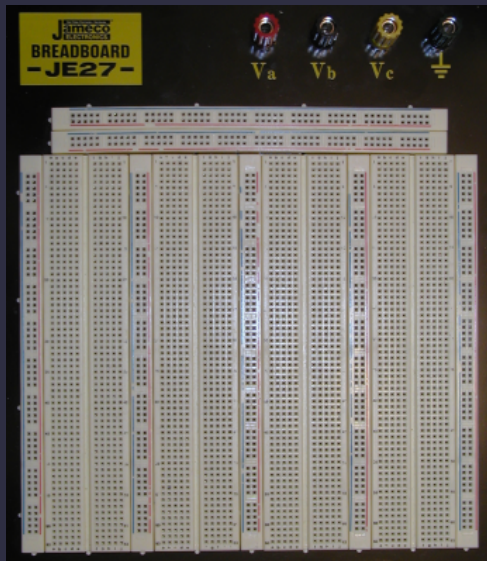


NORTHWESTERN
UNIVERSITY

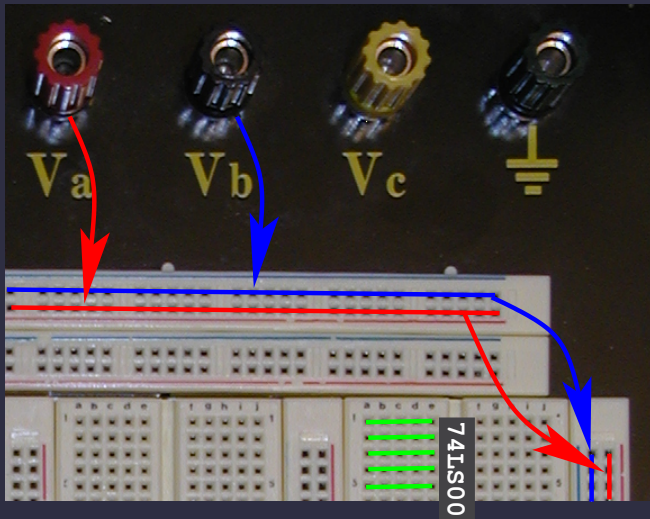
Outline

1. Lab tutorial
2. Computer geek culture

Breadboard



Breadboard



Logic probe



Light emitting diodes (LEDs)



Never drive an LED without a series current-limiting resistor!

Light emitting diodes (LEDs)



Never drive an LED without a series current-limiting resistor!

Resistors

- Color code sheet in your orange box
- Colored bands indicate numbers
- Black (0), brown (1), red (2), orange (3), yellow (4), etc.
- What is Orange, Orange, Black?
- What about Orange, Orange, Brown?

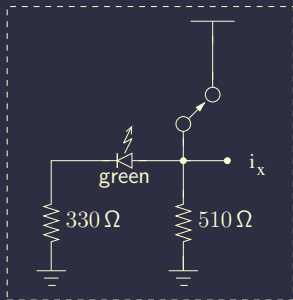
Transistor to transistor logic (TTL)

- Consumes more power than CMOS
- Generally more difficult to damage than CMOS (ESD)
- Inputs “float high”
- What does this imply?
- Why is it good for prototyping?

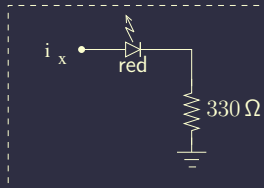
Guidelines

- Connect all inputs to some signal, best not to rely on floating
 - Good practice for CMOS, where it's essential
- Color-code wiring in complicated circuits
 - Learn how to strip wire
- Don't cross wire over chips
- Double-check V_{DD} and V_{SS} wiring
- Watch for hot chips
- Use current-limiting resistors on LEDs

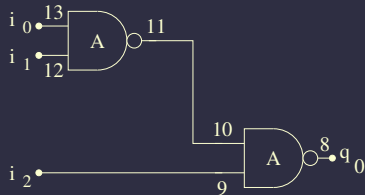
Circuit diagram example



input circuit

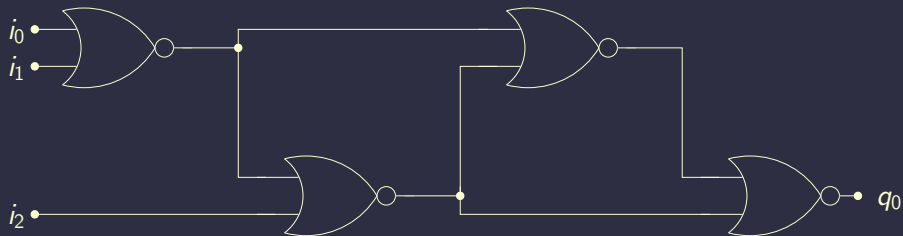


output circuit



(A) 74LS00

Incomplete circuit diagram example



Summary

- Demo to put prototyping in context
- Breadboarding lecture and demo

Prototyping trends

- Surface mount
- FPGAs
- Virtual prototyping

Outline

1. Lab tutorial
2. Computer geek culture

Computer geek culture references

- <http://www.digikey.com>
- <http://www.mouser.com>
- <http://www.jameco.com>